



## BOOM BARRIERS

**GANDHI**  
Automations Pvt Ltd

India's **No.1** Entrance Automation & Loading Bay Equipment Company

# EUROPEAN COLLABORATION AND TECHNOLOGY WITH INNOVATIVE AND CREATIVE ENGINEERING FOR MORE THAN 20 YEARS



## Quality & Safety - Our Priority

Boom Barriers are CE certified, manufactured in accordance with

- STANDARD**  
 EN 55014-1:2006 + A1:2009 + A2:2011  
 EN 55014-2:1997 + A1:2001 + A2:2008  
 EN 61000-3-2:2006 + A1 + A2:2009  
 EN 61000-3-3:2008  
 EN 60335-1; EN 60335-2  
 EN 300220-1:2012; EN 300220-2:2012  
 EN 301489-1:2011; EN 301489-3:2002  
 EN 62233:2008

**DIRECTIVES** : 2006/42/EC  
 2004/108/EC

Gandhi Automations develops and manufactures its products strictly in line with these standards. You are continuously assured safe operation with regular use, assembly and maintenance.

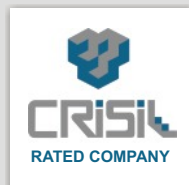


ISO 9001 : 2015, ISO 14001 : 2015  
 BS OHSAS 18001 : 2007



A PARTNER WHO STANDS BY YOUR SIDE

**10 YEARS**  
**GUARANTEED AVAILABILITY**



## ORIGINAL SPARE PARTS

Guaranteed original spare parts availability for 10 years





Although technology offers a variety of control systems, barriers remain the simplest and most convenient solution to control parking access. Gandhi Securo Plus barriers can easily and effectively meet your parking-access requirements for commercial or industrial premises, private areas to allow entrance to authorized people only. They have a simple and functional design to ensure safety, reliability and long life.

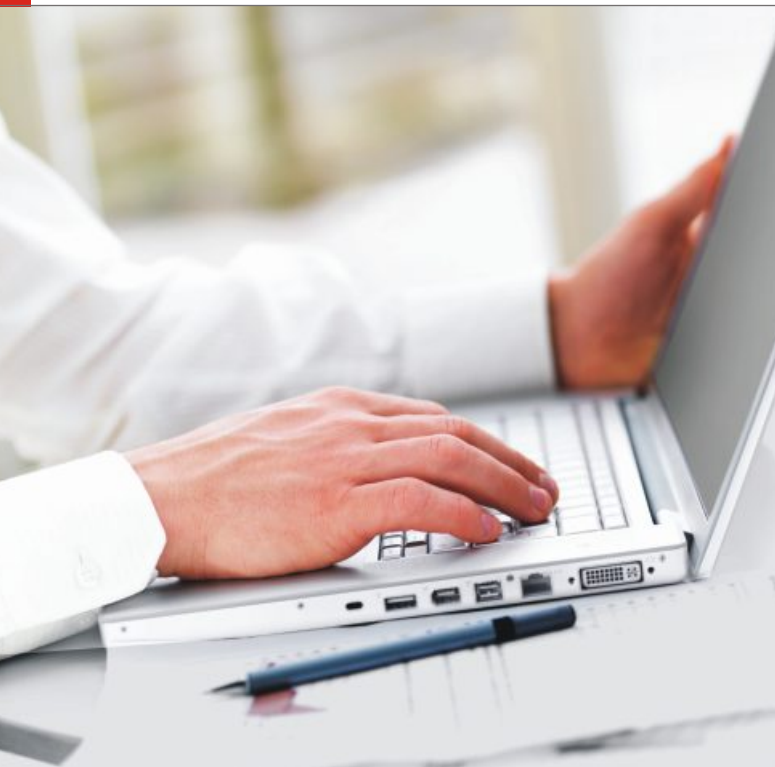
Furthermore, Securo Plus has barrier bars of different length and are available with a variety of functions to meet any particular operational requirement with maximum safety and effectiveness. The barriers can be installed facing each other or synchronized at the same access point and are available to operate independently or synchronized manner.

Some innovative features include :

- The exclusive built-in double LED Flashing Light needs no special maintenance and ensures complete visibility when the barrier bar is moving.
- The soft contours and rounded corners create an aerodynamic shape that offsets any swinging in windy areas as well as creating a contemporary, aesthetic design that blends well in any location.
- The aluminium bar is fitted with rubber guard located in the top and bottom section protects the user from possible risks when the bar is in motion, acts as safety guard.
- The 24 VDC motor with encoder ensures reliable operation of the barrier during heavy/high traffic.
- Key lock release for manual operation.



# Our Quality For Your Safety



Gandhi Automations Pvt Ltd is India's No.1 Entrance Automation and Loading Bay Equipment Company. This widely recognized position has been achieved over years of hard work, innovation, commitment to quality and reliable customer service. Since 1996 we have been designing, manufacturing, exporting and installing products that are problem free, safe and easy to operate.

## Head Office

Headquartered in Mumbai; the commercial capital of India, the company has expanded its manufacturing capacity, operations, geographical reach and customer base globally. Today our products are marketed by our distributors in more than 70 countries across the globe.

## Competent Advice

Proper customer guidance and service are our top priorities. Our well trained and experienced specialists are always at your disposal from the project planning stage to final building inspection. They help you to choose a perfect product solution tailored to your requirements.

## Quality Management

The company is certified to ISO 9001 : 2015, ISO 14001 : 2015, BS OHSAS 18001 : 2007 by TÜV Nord. This has resulted in the implementation of continuous improvement in personnel training, production, equipment calibration, machinery maintenance, logistics and customer relations.



## Nationwide Network

Ahmedabad	■	Coimbatore	■	Kolkata	■	Raipur	■
Bengaluru	■	Goa	■	Lucknow	■	Ranchi	■
Bhopal	■	Hyderabad	■	Mangalore	■	Surat	■
Bhubaneswar	■	Indore	■	Nagpur	■	Vadodara	■
Chandigarh	■	Jaipur	■	New Delhi	■	Visakhapatnam	■
Chennai	■	Kochi	■	Pune	■		





### Advance Manufacturing

Our strategically located state of the art manufacturing and warehousing facility of 3,00,000 sq. ft. near Bhiwandi (40km NE of Mumbai) ensures high-quality products and short delivery times.

In-house research and development is the vital element within innovative & creative engineering of Gandhi Automations.

All essential product components and control technology are designed and produced by Gandhi Automations with European collaboration and technology.

Our product engineering team uses the latest software combined with technologically advanced machinery to offer our customers an excellent engineered product.



### Packaging

Special care is taken while packaging our products for dispatch to the installation sites. Each consignment is supervised by a team of experts who ensure that material is dispatched efficiently and promptly.

### Install, Commissioning & Service

Our team of committed and diligent engineers and technicians; many of whom are trained at advanced training centers in Europe to ensure perfect installation and trouble-free commissioning according to our specifications assuring product reliability and longevity.



### Dynamic Customer Service

Our customer care team offers 24x7 service. We lay great emphasis on exceptional aftersales service and provide regular programmed inspections and maintenance safeguards which increases product lifetime and reduces operational cost.

Our widespread service network assures response time to a minimum.

In rare case of any product failure, all you need to do is reach for the telephone.



**TOLL FREE**

**1800 209 0200**

From Anywhere in India

One call and one of our highly trained service technicians will be on its way in a fully equipped customer service van with wide range of original spares.

# Securo Plus - Italian make

## Securo Plus



- Electromechanical Barrier for bar from 6 to 8 m, 24 VDC motor, with control unit in box, with encoder, double built-in LED flashing light
- For 6 m / 8 m barrier round aluminium boom  $\varnothing$  90 mm, with rubber guard, LED lights and fixed support
- Double spring (6 m model) to counter balance movement and make it more fluent
- Anti-UV rays epoxy powder coating
- Robust gears and levers for reliable functioning over time
- Performance increase: 6 sec opening time
- Encoder for obstacle detection and immediate run inversion
- Energy saving mode
- Universal box: bar can be installed both right or left



Metallic gear  
+ shock resistant motor

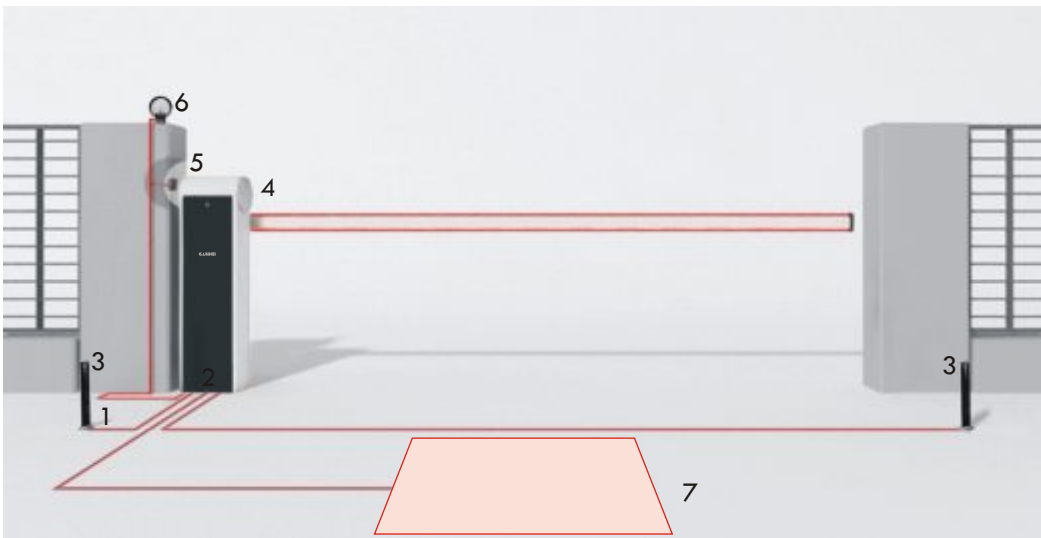


Double balance springs  
for smooth movement



Double LED Flashing Light

## Standard installation for electromechanical barriers

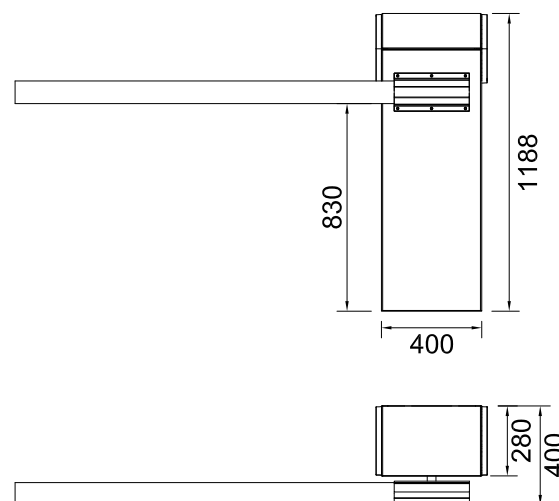


- 1 Post for Photocells
- 2 Barrier
- 3 Photocells
- 4 LED Flashing Light
- 5 Three Station Push Button
- 6 Flashing Light
- 7 Magnetic Loop Detector

Technical Data	Securo Plus
<b>Mechanical Data</b>	
Torque	250 Nm
Working cycle	80%
Opening time at 90°	6 sec
<b>Electrical Data</b>	
Power	24 VDC
Motor consumption	1.3 A
Absorbed power	300 W
Integrated lights	Yes
<b>Generic Data</b>	
Protection degree	IP 54
Dimensions (L-D-H)	450-280-1188 mm
Weight	67 kg
Working temperature	-20 +55 °C
Maximum bar length	6 *(8.4) m
Transit dimension	5.65 *(8) m

\*with 8 m bar

## Dimensions



For 6 m / 8 m Barrier

## Accessories



### Three Station Push Button

Mounted on wall or column in the vicinity of barrier with "Open / Emergency-Stop / Close" controls. Plastic housing IP 65



### Key Selector

Mounted on walls or columns in the vicinity of barrier with metal front, plastic back casing.



### Traffic Light / Flashing Light

They serve safety requirements & give visual signals for opening and closing impulse.



### Fixed Support / Mobile Support

The barrier bar normally rests on fixed support to be installed on the ground. It can also rest on mobile support attached with the bar, which moves along with the bar and useful when two barriers are installed in opposite locations to cover large openings.

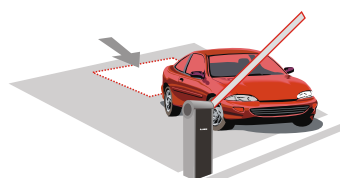
### Photocells



The photocells are mainly used to monitor the passageway. As long as the photocell beam is broken the barrier will not close. Two distinguished functions of the photocells

- Open : The barrier opens when the photocell beam is interrupted.
- Safety : The barrier remains open as long as the photocell beam is interrupted.

### Magnetic Loop Detector



Barrier automatically opens when a vehicle goes over the sensor fitted to the pavement. As a safety system, it detects the vehicle going past it and stops the bar from closing until the vehicle has gone through.



Indian Green Building Council  
M E M B E R



ISO 9001 : 2015, ISO 14001 : 2015  
BS OHSAS 18001 : 2007

Gandhi Automations operates a policy of continuous development and reserves the right to make appropriate technical modifications / replacements without prior notice.

# GANDHI

Automations Pvt Ltd

## India's No.1 Entrance Automation & Loading Bay Equipment Company

### CORPORATE OFFICE

Chawda Commercial Centre, Link Road, Malad (W), Mumbai-400064, India

Tel : +91 22 6672 0200 / 6672 0300 (200 Lines)

Fax : +91 22 6672 0201

Email : sales@geapl.co.in

Website : www.geapl.co.in



**TOLL FREE**

**1800 209 0200**

From Anywhere in India

Ahmedabad - 93273 01555  
Bengaluru - 93435 09090  
Bhopal - 93292 94939  
Bhubaneswar - 93385 69889  
Chandigarh - 93176 41324  
Chennai - 93809 31777  
Coimbatore - 93452 99944  
Goa - 93731 37970

Hyderabad - 93473 75737  
Indore - 93034 64410  
Jaipur - 93520 41024  
Kochi - 93882 04774  
Kolkata - 93300 60855  
Lucknow - 93055 67760  
Mangalore - 93797 41352  
Nagpur - 93250 45410

New Delhi - 93131 99044  
Pune - 93245 30710  
Raipur - 93524 40068  
Ranchi - 93044 95570  
Surat - 93270 97410  
Vadodara - 93756 41357  
Visakhapatnam - 93463 34102